






## Crawler Excavator | TC 260 LC, TC 260 NLC



-  max. 26,6 t
-  125 kW (168 hp)
-  0,48 - 1,87 m<sup>3</sup>



# CRAWLER EXCAVATOR TC260

## Technical Information

### ENGINE

COM III exhaust level	Cylinder capacity ..... 6,700 cm <sup>3</sup>	Battery ..... 2x 12 V/100 Ah
Power according to ISO 9249..... 125kW (168 HP)	Number of cylinders ..... 6	Alternator..... 24 V/70 Ah
RPM ..... 2000/min	Automatic idle ..... Standard	Starter..... 24 V/3.2 kW
Make/model..... Cummins QSB 6.7	Cooling system ..... Water-cooled	
Design..... Turbocharger/LLK	Air filter ..... Dry air filter	

### HYDRAULICS SYSTEM

<ul style="list-style-type: none"> <li>• 2 maximum-load-controlled high-performance piston pumps</li> <li>• Dual-circuit hydraulics system</li> <li>• 7 standard consumer loads in one control block</li> <li>• Hydraulischer Anbausatz für Greifen serienmäßig (ohne Drehen)</li> <li>• Up to 2 additional control circuits possible</li> <li>• Fuel-efficient pump control</li> <li>• Proportional, independent control of all movements</li> <li>• Primary and secondary protection against overload</li> </ul>	<ul style="list-style-type: none"> <li>• Pump flow control</li> <li>• Prefill valves for all work functions</li> <li>• Load-hold and fine-drop valve in lifting circuit</li> <li>• Max. discharge flow ..... 480 l/min</li> <li>• Max. operating pressure ..... 340 (370)*bar</li> </ul>
<b>Operating modes:</b>	
3 pre-programmed modes (Fine, Eco, Power)	

### PIVOTING ASSEMBLY

<ul style="list-style-type: none"> <li>• Oscillating motor: ..... Axial piston motor with priority valve</li> <li>• Pivoting transmission: ..... Multistage planetary gear</li> <li>• Pivoting brakes: ..... Automatic multidisc parking brake</li> </ul>	<ul style="list-style-type: none"> <li>• Can also be operated manually</li> <li>• Max. upper wagon RPM ..... 10.5/min</li> <li>• Oscillating torque ..... 88.10 (95,88)*kNm</li> </ul>
---	--

### TRACTION DRIVE AND BRAKES

<ul style="list-style-type: none"> <li>• Steering: 2 control levers / pedals enable separate drive of both chains</li> <li>• Traction drive: 2 automatic drive positions</li> <li>• Brakes: Hydraulic, service-free multidisc brakes</li> </ul>	<ul style="list-style-type: none"> <li>• Maximum speed ..... 3.3 /5.8 km/h</li> <li>• Tractive force ..... 1240*kN</li> <li>• Max. climbing power ..... 70%</li> </ul>
---	--

### LOWER WAGON

<b>Construction:</b>	<b>Drives:</b>	
<ul style="list-style-type: none"> <li>• Model X</li> <li>• Lifetime lubrication of track and carrier rollers</li> <li>• 4 lashing grommets</li> </ul>	<ul style="list-style-type: none"> <li>• Drive quality B4HD</li> <li>• Three-section base plates</li> <li>• Chains lubricated</li> <li>• Sealed bolts</li> </ul>	<ul style="list-style-type: none"> <li>• Chain tension via hydraulic oil cylinder and pre-tensioned steel spring</li> <li>• Wheel base LC ..... 2.40 m</li> <li>• Wheel base NLC ..... 2.20 m</li> </ul>

### FILL LEVELS

Fuel tank ..... 389 l	Engine oil ..... 20 l
Cooling system ..... 42 l	Hydraulic tank volume ..... 216 l

### DRIVER CAB

<b>CAB</b>	<b>STEERING</b>	<b>CLIMATE CONTROL</b>
<ul style="list-style-type: none"> <li>• Extra-wide entrance</li> <li>• Left arm console can be folded up</li> <li>• Spacious leg room</li> <li>• Excellent all-around view</li> <li>• Preparation for radio installation</li> </ul>	<ul style="list-style-type: none"> <li>• Ergonomically designed pilot lever</li> <li>• Clear and concise arrangement of the switches in the control panel</li> </ul>	<ul style="list-style-type: none"> <li>• Air conditioner standard in all models</li> <li>• Very good air distribution through optimally arranged nozzles</li> </ul>
	<b>MONITORING</b>	
<b>DRIVER'S SEAT</b>	<ul style="list-style-type: none"> <li>• Operating data appears in a display</li> <li>• Automatic monitoring, warning and saving</li> </ul>	<ul style="list-style-type: none"> <li>ISO 6396 (LpA) in driver cab ..... 72 dB(A)</li> <li>2000/14EG (LwA) based on outside level ..... 103 dB(A)</li> </ul>
<ul style="list-style-type: none"> <li>• Comfort seat, air-suspended</li> <li>• Arm rests and lumbar support</li> <li>• Can be adjusted separately from the console</li> </ul>		

\* Values when pressure is switched on

## Equipment

### OPERATING WEIGHTS

Monoblock
Ground plate width 500mm
Ground plate width 600mm
Ground plate width 700mm
Ground plate width 800mm

Crawler Excavator TC 260 LC		
Monoblock 5,95 m (C25.3M) Bending arm 2,50 m (D25.2)		Monoblock 6,95 m (C25.5M) Bending arm 3,20 m (D25.3)
-	-	-
25,4 t		25,8 t
25,7 t		26,1 t
26,0 t		26,5 t

### OPERATING WEIGHTS

Adjustable main arm   Adjustable boom
Ground plate width 500mm
Ground plate width 600mm
Ground plate width 700mm
Ground plate width 800mm

Crawler Excavator TC 260 LC		
1,95 m (C25.41)   4,23m (C25.46) Bending arm 2,15 m (D21.23)		1,95 m (C25.41)   4,23m (C25.46) Bending arm 2,65 m (D21.33)
-	-	-
25,7 t		25,7 t
26,0 t		26,0 t
26,3 t		26,3 t

Operating weight with driver, completely filled implement and 1,0 t for attachments

### STANDARD EQUIPMENT

<b>Engine:</b>	<ul style="list-style-type: none"> <li>• Cylinder end-stop damping</li> <li>• Accumulator for emergency lowering of the arm system</li> </ul>	<b>Equipment:</b>
<ul style="list-style-type: none"> <li>• COM III exhaust level</li> <li>• 6 cylinders</li> <li>• RPM / potentiometer</li> <li>• Automatic idle</li> <li>• Diesel pre-filter</li> <li>• Engine monitoring</li> </ul>		<ul style="list-style-type: none"> <li>• Consolidated lubrication points for rotating assembly and arm equipment</li> </ul>
<b>Hydraulics:</b>	<b>Cab:</b>	<b>Lower wagon</b>
<ul style="list-style-type: none"> <li>• Maximum-load-controlled double displacement pump</li> <li>• Hydraulischer Anbausatz für Greifen (ohne Drehen)</li> <li>• Hammerhydraulik (max.200 Liter)</li> <li>• Scherenhydraulik (max.200 Liter)</li> <li>• Pipe rupture valve for lifting cylinder</li> <li>• Pressure control level</li> </ul>	<ul style="list-style-type: none"> <li>• Air conditioner</li> <li>• Radio preparation</li> <li>• Air-suspended comfort seat</li> <li>• Seat can be moved separately from control panel</li> <li>• Left arm console can be folded up</li> <li>• Heat-insulating glass, tinted windows</li> <li>• Operating data appears in a display</li> </ul>	<ul style="list-style-type: none"> <li>• X frame with complex box-profile construction</li> <li>• Integrated, hydraulic traction drive with brake valve</li> <li>• Automatic, hydraulic, service-free multi-disc brakes</li> <li>• Chain tensioning can be adjusted via oil cylinder</li> <li>• Lubricated, sealed chains</li> <li>• 4 lashing grommets on the lower wagon</li> </ul>
	<b>Upper wagon, other:</b>	
	<ul style="list-style-type: none"> <li>• Tool box</li> </ul>	

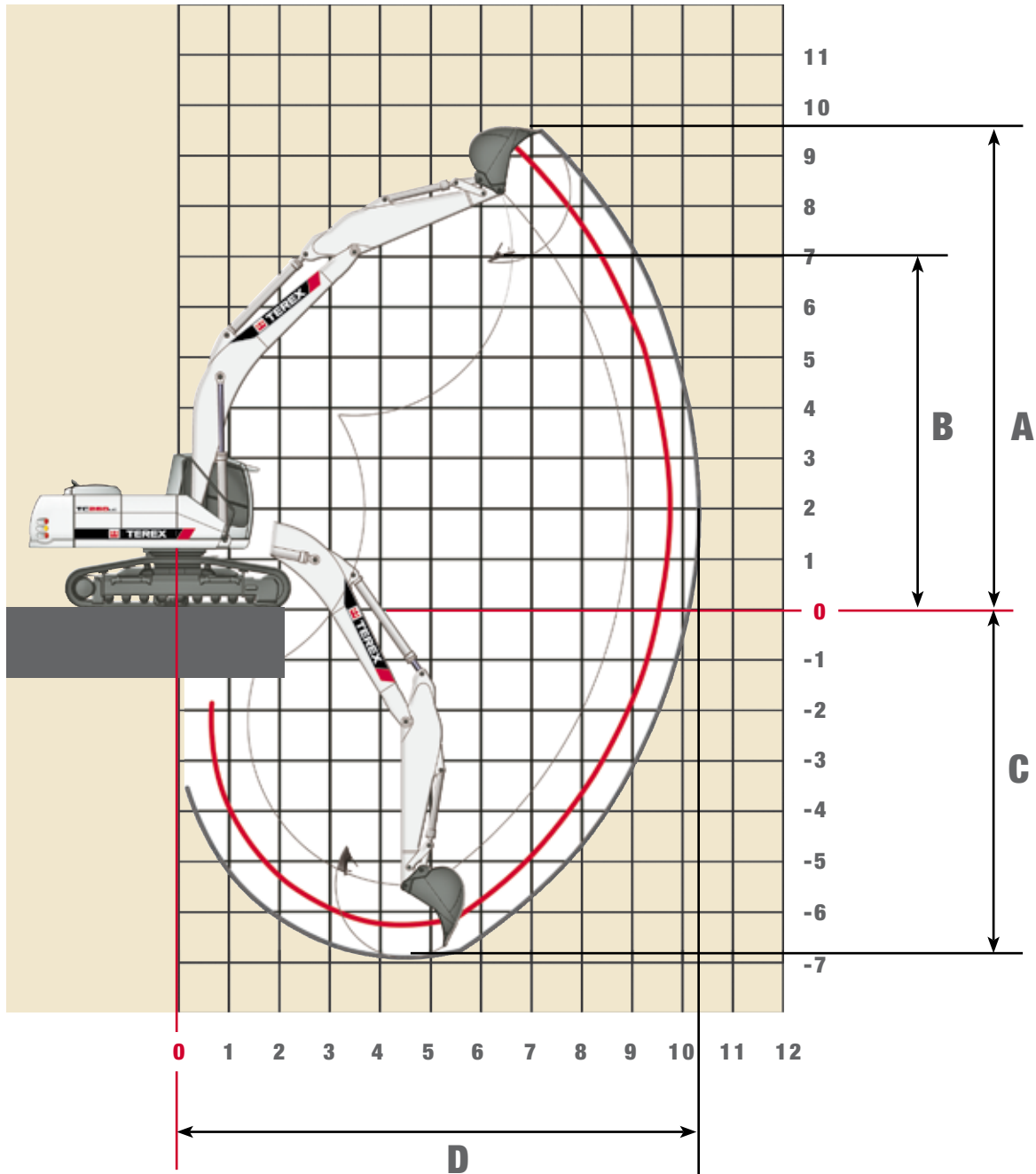
### SPECIAL EQUIPMENT

<b>Monoblock:</b>	<b>Engine:</b>	<b>Equipment:</b>
<ul style="list-style-type: none"> <li>• Monoblock with bending cylinder 5,95m (C25.3M)</li> <li>• Monoblock with bending cylinder 6,95m (C25.5M)</li> </ul>	<ul style="list-style-type: none"> <li>• Fuel pump</li> <li>• Supplementary heating system</li> <li>• Cold startup assistance</li> </ul>	<ul style="list-style-type: none"> <li>• Electrical central lubrication system</li> </ul>
<b>Bending arms for Monoblock:</b>	<b>Hydraulics:</b>	<b>Cab:</b>
<ul style="list-style-type: none"> <li>• Bending arm 2,50 m (D25.2)</li> <li>• Bending arm 3,20 m (D25.3)</li> </ul>	<ul style="list-style-type: none"> <li>• Scissors / sorting gripper function with comfort pressure controller</li> <li>• Gripper / gripper rotating function</li> <li>• Up to two additional circuits</li> <li>• Floating function for the boom</li> <li>• Hydraulic quick switch device</li> <li>• Pipe rupture valve for bending cylinder</li> <li>• Pipe rupture valve for scoop tipping cylinder</li> <li>• Bio oil</li> </ul>	<ul style="list-style-type: none"> <li>• Rock protection guard</li> <li>• Flood lights</li> <li>• 360° lighting</li> <li>• Radio</li> <li>• Heated driver's seat</li> </ul>
<b>Adjustable booms:</b>		<b>Other special equipment:</b> See price list
<ul style="list-style-type: none"> <li>• Adjustable main arm 1,95 m (C25.41)</li> <li>• Adjustable boom with bending cylinder 4,23 m (C25.46)</li> </ul>		
<b>Bending arms for adjustable booms:</b>		
<ul style="list-style-type: none"> <li>• Bending arm 2.15 m (D21.23)</li> <li>• Bending arm 2.65 m (D21.33)</li> </ul>		

### ATTACHMENTS

Content SAE	0,48 m <sup>3</sup>	0,93 m <sup>3</sup>	1,17 m <sup>3</sup>	1,53 m <sup>3</sup>	1,65 m <sup>3</sup>
Cutting width	600 mm	1000 mm	1200 mm	1500 mm	1600 mm
Weight	620 kg	730 kg	830 kg	990 kg	1070 kg
reach NLC (m)	9,0	8,5	7,5	6,5	6,0
reach LC (m)	9,0	9,0	8,0	6,5	6,5

stability acc. to ISO 10567, bulk weight 1.8 t/m<sup>3</sup>

**Work Areas Monoblock 5,95 m (C 25.3M)**


BENDING ARM LENGTHS	2,50m (D25.2)	3,20m (D25.3)
A Max. cut-in height	9,10 m	9,36 m
B Max. pouring height	6,50 m	6,77 m
C Max. trench depth	6,13 m	6,83 m
D Max. reach	9,92 m	10,55 m
Max. breakaway torque	168* kN	168* kN
Max. breakout force	161* kN	136* kN

Unit is equipped with monoblock attachment 5.95 m (C25.3M).

\* When pressure is switched on

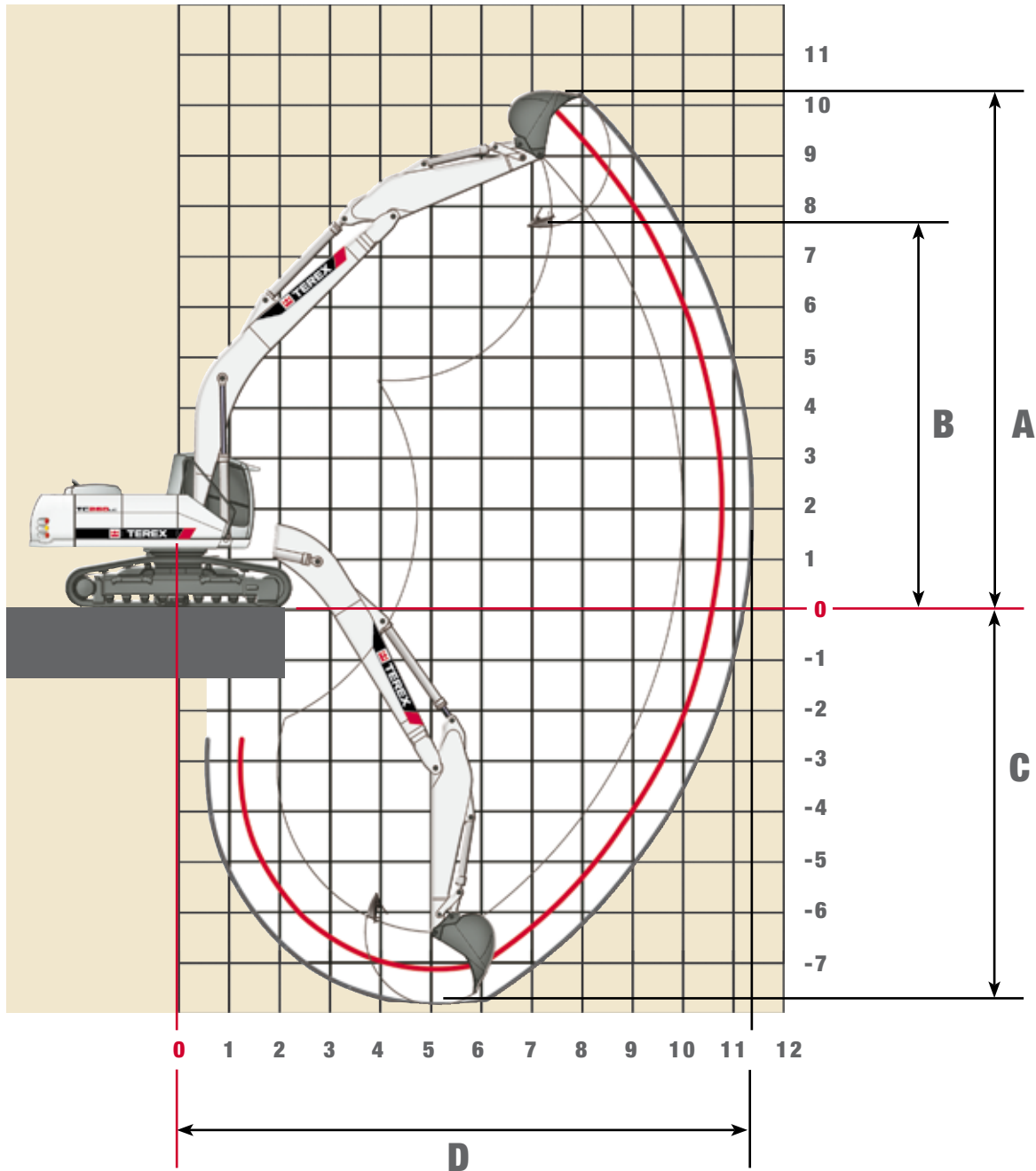
## Lifting capacities Monoblock 5,95 m (C 25.3M)

### TC 260 LC Lifting capacity at 370 bar

HEIGHT	3,0 m		4,5 m		6,0 m		7,5 m		9,0 m	
	FRONT	LATERAL	FRONT	LATERAL	FRONT	LATERAL	FRONT	LATERAL	FRONT	LATERAL
<b>Monoblock 5,95 m (C 25.3M) with bending arm 2,50 m (D 25.2) Max. reach 9.92 m</b>										
+9,0 m										
+7,5 m										
+6,0 m					9737*	7282				
+4,5 m			13427*	10705	10391	7039	7352	5088		
+3,0 m			15810	9926	10026	6717	7197	4947		
+1,5 m			15160	9393	9704	6433	7039	4803		
0 m			14955	9225	9509	6263	6932	4705		
-1,5 m	15061*	15061*	15034	9290	9491	6247	6949	4721		
-3,0 m	22419*	18383	15250	9467	9627	6366				
-4,5 m			12605*	9815						
<b>Monoblock 5,95 m (C 25.3M) with bending arm 3,20 m (D 25.3) Max. reach 10.55 m</b>										
+9,0 m										
+7,5 m										
+6,0 m							7559	5264		
+4,5 m					9820*	7158	7432	5164		
+3,0 m			15119*	10153	10121	6786	7233	4968	5509	3811
+1,5 m			15237	9434	9719	6431	7029	4782	5421	3730
0 m			14804	9078	9442	6187	6874	4641		
-1,5 m			14739	9024	9329	6088	6815	4588		
-3,0 m	22054*	17723	14901	9157	9406	6156	6908	4672		
-4,5 m	20384*	18242	14907*	9443	9665	6384				

The specified max. loading capacities in kilogram include a stability of 33% or are calculated at 87% of the hydraulic lifting power, as per ISO10567. These values are applicable at the tip of the arm with optimum positioning of the corresponding arm system and with the pressure switched on. \* Value limited due to hydraulics.

## Work Areas Monoblock 6,95 m (C 25.5M)



BENDING ARM LENGTHS	2,50m (D25.2)	3,20m (D25.3)
A Max. cut-in height	9,81 m	10,08 m
B Max. pouring height	7,21 m	7,48 m
C Max. trench depth	6,99 m	7,69 m
D Max. reach	10,94 m	11,58 m
Max. breakaway torque	168* kN	168* kN
Max. breakout force	161* kN	136* kN

Unit is equipped with monoblock attachment 6,95 m (C25.5M).

\* When pressure is switched on

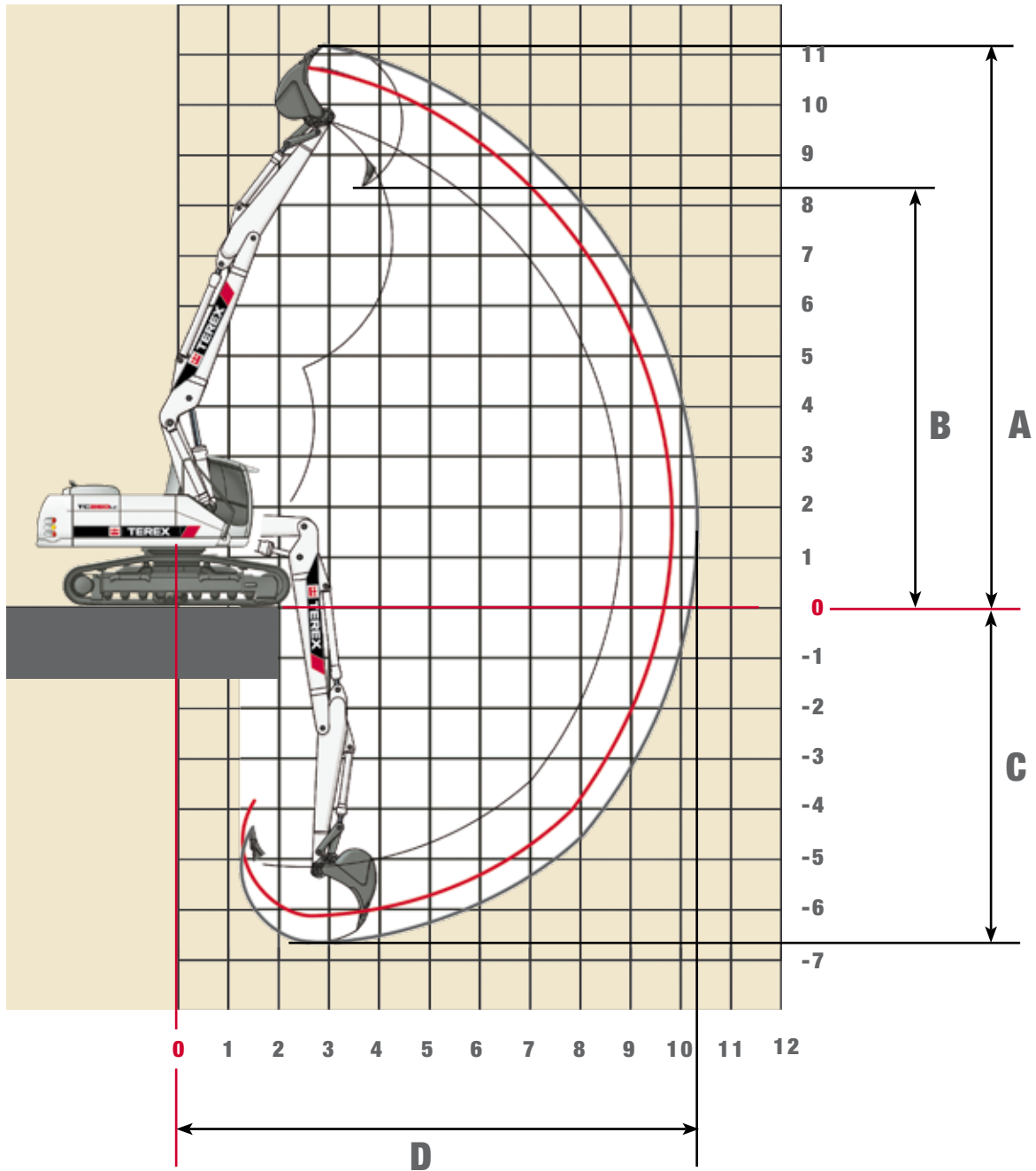


## Lifting capacities Monoblock 6,95 m (C 25.5M)

### TC 260 LC Lifting capacity at 370 bar

HEIGHT	3,0 m		4,5 m		6,0 m		7,5 m		9,0 m	
	FRONT	LATERAL	FRONT	LATERAL	FRONT	LATERAL	FRONT	LATERAL	FRONT	LATERAL
<b>Monoblock 6,95 m (C 25.5M) with bending arm 2,50 m (D 25.2) Max. reach 10,94 m</b>										
+9,0 m										
+7,5 m							7490	5197		
+6,0 m							7428	5140		
+4,5 m					10120	6778	7238	4968	5496	3795
+3,0 m					9646	6361	7010	4760	5399	3706
+1,5 m					9296	6053	6809	4578	5297	3611
0 m					9125	5903	6678	4459	5228	3547
-1,5 m			14574	8879	9122	5900	6649	4432		
-3,0 m	16875*	16875*	14749	9023	9227	5993	6733	4508		
-4,5 m			13951*	9274	9454	6193				
<b>Monoblock 6,95 m (C 25.5M) with bending arm 3,20 m (D 25.3) Max. reach 11,58 m</b>										
+9,0 m										
+7,5 m										
+6,0 m										
+4,5 m							7527	5218	5625	3905
+3,0 m					9700*	6895	7301	5013	5536	3823
+1,5 m					9731	6421	7031	4767	5400	3697
0 m					9284	6028	6782	4541	5264	3571
-1,5 m			10619*	8471	9019	5794	6603	4378	5160	3475
-3,0 m			14169	8523	8926	5713	6514	4297	5123	3440
-4,5 m			14337	8661	8993	5771	6554	4334		

The specified max. loading capacities in kilogram include a stability of 33% or are calculated at 87% of the hydraulic lifting power, as per ISO10567. These values are applicable at the tip of the arm with optimum positioning of the corresponding arm system and with the pressure switched on. \* Value limited due to hydraulics.

**Work Areas Adjustable Boom 1,95 m (C 25.41) and 4,23 m (C25.46)**


BENDING ARM LENGTHS	2.15m (D21.23)	2.65m (D21.33)
A Max. cut-in height	10,68 m	11,10 m
B Max. pouring height	8,01 m	8,43 m
C Max. trench depth	6,28 m	6,67 m
D Max. reach	9,79 m	10,26 m
Max. breakaway torque	170 (185)* kN	170 (185)* kN
Max. breakout force	138 (150)* kN	120 (131)* kN

Unit is fitted with adjustable main boom 1.95 m (C21.41) and adjustable boom 3.41 m (C21.46). \* When pressure is switched on



## Lifting capacities Adjustable Boom 1,95 m (C 25.41) and 4,23 m (C25.46)

### TC 260 LC

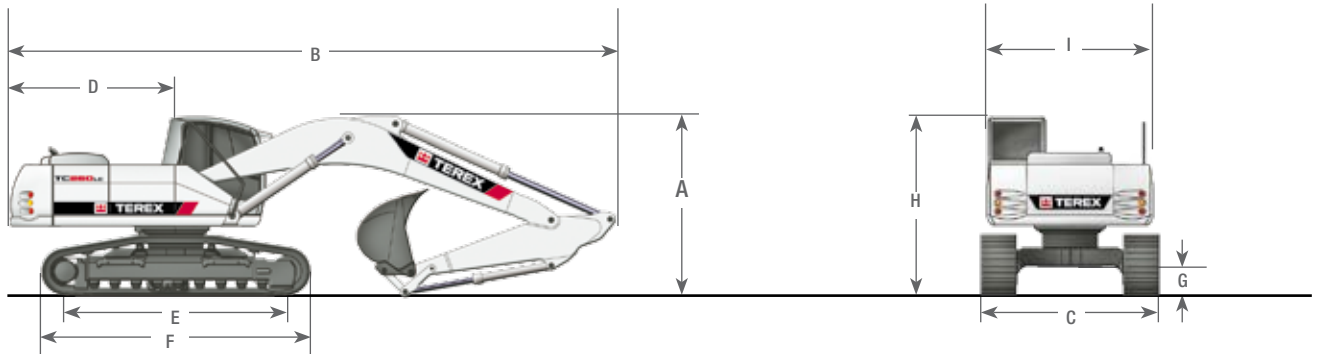
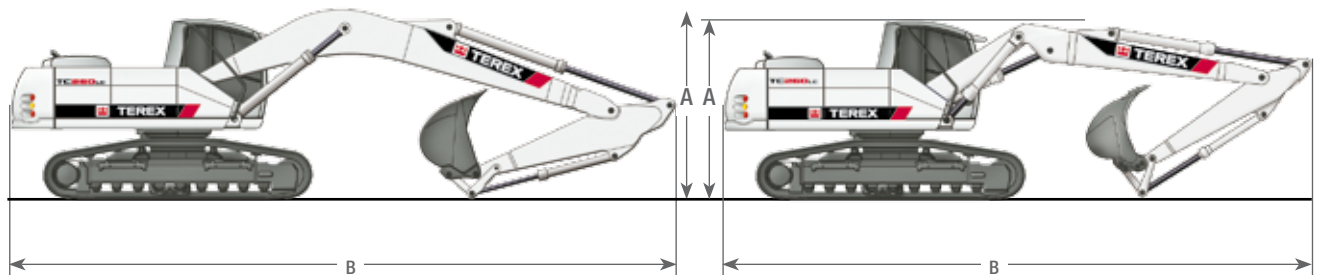
Lifting capacity at 360 bar

HEIGHT	3.0 m		4.5 m		6.0 m		7.5 m		9.0 m	
	FRONT	LATERAL	FRONT	LATERAL	FRONT	LATERAL	FRONT	LATERAL	FRONT	LATERAL
<b>Adjustable boom 1.95 m (C 25.41) and 4.23 m (C25.46) with bending arm 2.15 m (D 21.23) Max. reach 9,79 m</b>										
+8.0 m			7875*	7875*						
+7.0 m			7603*	7603*	7236*	6827				
+6.0 m	9031*	9031*	8088*	8088*	7149*	6842				
+5.0 m	11209*	11209*	9151*	9151*	7396*	6797	6546*	4881		
+4.0 m	9543*	9543*	10156*	9882	7813*	6745	6802*	4912	6051*	4401
+3.0 m	9627*	9627*	11508*	9758	8362*	6694	7020*	4907	6687*	4404
+2.0 m	12055*	12055*	12558*	9703	8968*	6669*	7340*	4870	6688	4379
+1.0 m	14693*	13890	13689*	9702	9609*	6683	7371	4810	6641	4335
0 m	17097*	13982*	14208*	9756	9944*	6719	7291	4734	6583	4283
-1.0 m	19025*	14081	14281*	9791	10014	6542	7216	4662		
-2.0 m	19393*	13954	14400*	9686	10124	6376	7060*	4642		
-3.0 m	19648*	13933	14723*	9530	10029	6288				
-4.0 m	19313*	13798	13539*	9414						
<b>Adjustable boom 1.95 m (C 25.41) and 4.23 m (C25.46) with bending arm 2.65 m (D 21.33) Max. reach 10,26 m</b>										
+8.0 m			6876*	6876*	6514*	6514*				
+7.0 m			6772*	6772*	6660*	6660*				
+6.0 m			7270*	7270*	6763*	6763*	6120*	4952		
+5.0 m	9711*	9711*	8318*	8318*	7053*	6825	6275*	5013	5919*	4491
+4.0 m	10437*	10437*	9531*	9531*	7471*	6760	6447*	5035	6303*	4518
+3.0 m	10416*	10416*	10760*	9792	8010*	6696	6713*	5025	6479*	4512
+2.0 m	12547*	12547*	12177*	9691	8615*	6656	7047*	4984	6729	4479
+1.0 m	14373*	13818	13553*	9671	9249*	6642	7318	4917	6727	4424
0 m	16330*	13882	14120*	9694*	9847*	6681*	7361	4826	6656	4355
-1.0 m	18373*	14001	14185*	9775	9940	6661	7280	4733	6584	4285
-2.0 m	19232*	13978	14284*	9704	10056*	6486	7204	4658	6555	4256
-3.0 m	19436*	13898	14455*	9643	10059	6323				
-4.0 m	19974*	13865	14655*	9441	9183*	6278				

The specified max. loading capacities in kilogrammes include a stability of 33% or are calculated at 87% of the hydraulic lifting power, as per ISO10567.

These values are applicable at the tip of the arm with optimum positioning of the corresponding arm system and when the pressure is switched on. \*Value limited due to hydraulics.

## Dimensions

**Monoblock 5,95 m (C25.3M)**

**Monoblock 6,95 m (C25.5M)**
**Adjustable boom 1,95 m (C25.41) and 4,23 m (C25.46)**


A TRANSPORT HEIGHT		B TRANSPORT LENGTHS	
Monoblock 5.95 m (C25.3M) with bending arm 2.50 m (D25.2)	3,05 m	Monoblock 5.95 m (C25.3M) with bending arm 2.50 m (D25.2)	10,12 m
Monoblock 5.95 m (C25.3M) with bending arm 3.20 m (D25.3)	3,35 m	Monoblock 5.95 m (C25.3M) with bending arm 3.20 m (D25.3)	10,15 m
Monoblock 6.95 m (C25.5M) with bending arm 2.50 m (D25.2)	3,20 m	Monoblock 6.95 m (C25.5M) with bending arm 2.50 m (D25.2)	11,14 m
Monoblock 6.95 m (C25.5M) with bending arm 3.20 m (D25.3)	3,35 m	Monoblock 6.95 m (C25.5M) with bending arm 3.20 m (D25.3)	11,15 m
Adjustable boom, 1.95 m (C25.41) and 4.23 m (C25.46)		Adjustable boom, 1.95 m (C25.41) and 4.23 m (C25.46)	
with bending arm 2.15 m (D21.23)	3,15 m	with bending arm 2.15 m (D21.23)	9,88 m
with bending arm 2.65 m (D21.33)	3,15 m	with bending arm 2.65 m (D21.33)	9,93 m
<b>C TRANSPORT WIDTHS</b>	<b>SPUR LC</b>	<b>D REAR PIVOTING RADIUS</b>	<b>2,80 m</b>
Ground plate width 500 mm	2,40 m	<b>E SUPPORTING CHAIN LENGTH</b>	<b>3,70 m</b>
Ground plate width 600 mm	3,00 m	<b>F DRIVE LENGTH</b>	<b>4,53 m</b>
Ground plate width 700 mm	3,10 m	<b>G GROUND CLEARANCE</b>	<b>0,44 m</b>
Ground plate width 800 mm	3,20 m	<b>H HEIGHT ABOVE CAB</b>	<b>3,01 m</b>
		<b>I UPPER WAGON TRANSPORT WIDTH</b>	<b>2,80 m</b>

We reserve the right to make structural changes, data is informational only, units comply with the new European safety guidelines.



TEREX Atlas  
 Atlasstr. 6  
 27777 Ganderkesee  
 Deutschland  
 Tel. +49 (0) 4222 / 954-0  
 Fax: +49 (0) 4222 / 954-343

www.terex.de  
 E-Mail: info@terex-atlas.de